



**CELEBRATING
20 YEARS**



Community
Foundation
of Southeastern Alberta

SMART AND CARING COMMUNITY

COMMUNITY FOUNDATION OF SOUTHEASTERN ALBERTA
ANNUAL REPORT 2011-2012
20TH ANNIVERSARY EDITION

CHAIR AND EXECUTIVE DIRECTOR'S MESSAGE

Just over twenty years ago the Community Foundation came into existence. We held a small celebration in June with the showing of "The Ultimate Gift". At that event we were pleased to launch all our new branding, logo, website and our new Smart and Caring Community Fund to commemorate our 20th Anniversary. This is part of a challenge issued by the patron of all Community Foundations in Canada, His Excellency, The Right Honourable David Johnson, Governor General of Canada.

Recognizing the important leadership role that we play in the community, we were pleased to announce the introduction of a new grants program. The "Vital Impact Grant" program is a proactive grant that seeks to address issues that the Board identifies through the Vital Signs® program. The first grants made in May 2012 were focused on youth and poverty reduction. We recognize the importance of programs such as this in demonstrating our in-depth community knowledge, and as an example of opportunities for community action.

This year we said farewell to retiring board members Abbe Barton, Bill Cocks, Les Erickson, Jason Melhoff, Jacquie Penner and after 6 years' service, Chair of the Board, Cory Baksa. Thank you for everything you have done for the Community Foundation. To new board members Luke Day, Darren Folkersen, Tiffany Krinke, Warren Stark, Phyliss Verhoeven and Don Weisbeck, a warm welcome. To the organizations that turn grants into vital programs and generous donors who make it all possible, thank you. The Community Foundation will continue to make a positive impact and work towards our vision of Creating a better community: Today, Tomorrow, Forever.

Gerry Labas, Chair
Mike Christie, Executive Director

TABLE OF CONTENTS

History	3
Vision	
Mission	
Professional Management	
Power of Endowment	
Bill Bauman Remembered	4
Vital Community Development	5
Youth in Philanthropy	6
Grants Awarded	7 - 9
Financials	10 - 11
Heritage Club	12
Legacy Club	
Board	13
Committees	
Staff	
Funds	14 - 15

HISTORY

The idea of organizing a charitable foundation for Southeastern Alberta began with rancher John O. Ignatius. The Medicine Hat Community Foundation was then founded in 1992 through an act of Legislature of the Province of Alberta. It is a non-government, non-political and non-religious independent organization that operates under the guidance of a diverse group of community-minded volunteer Board of Directors.

VISION

Creating a better community:
Today, Tomorrow, Forever.

MISSION

Improving the quality of life for the people of Southeastern Alberta through developing permanent endowments, making responsible grants and inspiring community leadership.

PROFESSIONAL MANAGEMENT

Investment Manager:
Jarislowsky Fraser Ltd.

Banker:
TD Canada Trust

Custodian:
RBC Dexia

Auditor:
Ensminger, Beck & Thompson

Legal Counsel:
David Carter

Financial gifts to the Foundation are endowed, which means they are not spent but are permanently invested. The interest earned from the investment is then used to make charitable grants to the community to provide ongoing support forever. Most gifts are placed together into one pooled investment.

Approximately 3.5% of the earnings are disbursed annually providing a much needed self-sustaining revenue stream for charitable activities. After just over 28 years the equivalent of the full value of the original gift will have been disbursed and the original gift is still intact.

THIS IS THE POWER OF ENDOWMENT

CREATING AN ENDOWMENT

Is a simple process and surprisingly affordable and just about anyone could afford. Options for a named fund start at as little as \$1000.

BILL BAUMAN REMEMBERED



February 13, 1924 – February 6, 2012

In February 2012, the Community Foundation, along with a large number of people from Southeastern Alberta, mourned the passing of Mr. Bill Bauman.

Bill was a lifetime honorary board member, past board chair and one of the members of the original organizing committee that created the Community Foundation in 1992. The original idea for a Community Foundation in this area came from John Ignatius, and he was chair of the Board for the first year. However it was under Bill Bauman's leadership, who was chair for the next three years until June 1996, that the Community Foundation became truly established as a permanent fixture in the local charitable sector.

Bill grew up on the family homestead near Young, Saskatchewan, and in 1943 he left to join the Air Force. He was posted to Eastern Canada where he trained as an electrician and worked on combat aircraft during the war years. After jobs in construction Bill and his family moved to Edmonton for work. In the early 1970s an opportunity arose to work in Medicine Hat. Bill became a shareholder and general manager of South Rock Ltd. At that time he was the sole employee but today the company has been in business for 39 years and employs around 350 people.

Bill served as an Alderman for the City of Medicine Hat from 1986 to 1989. Aside from the Community Foundation (Chair of the Board), Bill was a keen supporter of numerous community organizations including, the Kiwanis Club, the Al-Azhar Shrine Club, the Chamber of Commerce (President), the Cypress Club (President), and in 2005 was an Alberta Centennial Ambassador for Medicine Hat.

Bill was a very passionate family man who cared deeply for his community. He would visit the Community Foundation regularly and enjoyed nothing more than engaging in conversation about the latest issues facing our regional area. Bill was a fairly formal, conservative gentleman who preferred people speak their mind in a concise logical kind of way. He could run a good meeting and keep everyone on goal and although he held his own strong opinions, ensured that everyone had a chance to say their piece. He was the kind of person who you could exchange opinions with, and at times disagree with his views but leave the meeting as good friends.

It is difficult to summarize what a huge impact Bill had on the Community Foundation in a few short words. Although some community foundation framework had been in existence for a number of years they were only just getting organized as a national group when Bill took over as Chair. Already highly motivated by the concept of permanent charitable endowments, he attended a Community Foundations of Canada Conference in Vancouver where he met a large number of people with similar values from right across the country. He returned highly enthusiastic, focused and driven to ensure the local foundation became a success. During his tenure as chair the core principles, value and practices of the organization were established and have not changed too radically to this day. Bill's involvement with the Foundation brought a level of credibility and community awareness that was unparalleled. He will be sadly missed by everyone at the Community Foundation.

VITAL COMMUNITY DEVELOPMENT

In 2007, the Community Foundation launched Vital Signs. The primary purpose of the report has always been to measure in some way the quality of life we enjoy, or put another to take the pulse of our community. Why was this necessary? Well certainly as far as we are concerned Vital Signs enables the Foundation to be as knowledgeable about our community as possible and allows us to identify vital community development opportunities. It also ensures that we are able to connect donors with the issues they care about and to assist us with our grant decisions. Over the years, Vital Signs has evolved into much more than just a useful report that the leaders of our community have come to rely on.

VITAL ACTIVITY

As a result of Vital Signs® the foundation created a number of programs as part of the Foundation's Vital Community Development activities, which we call Vital Activity. For example Vital Munch and Vital Kids are community education programs that raise awareness about some of the interesting facts and issues of our community. Vital Munch is a speaker series bringing members of the community to forums for specific concerns. Vital Kids takes the Foundation staff into the schools to discuss our community with the students.

VITAL IMPACT GRANT

In the 2011/2012 year the Foundation announced a new 'Vital' program to be called "Vital Impact Grant".

For many years the Foundation Board has discussed the opportunity for developing a proactive grant program. This year those discussions turned into action. On May 15, 2012 the Board announced the first Vital Impact Grant. The Vital Impact Grant's purpose is to put financial support into issues addressed within the Vital Signs® report; a full circle approach to community development. The program is overseen by the Vital Community Development Committee and the recommendations are taken to the Board for final approval.

The main difference between this and other grant programs provided by the Foundation is programs or opportunities for support are sought on a proactive basis. Objectives include new innovative approaches to solving problems and preference to convene or partner other organizations to increase the impact of the funds provided by the Foundation.

This year the \$10,000 provided by the Foundation, resulted in a \$43,000 financial impact. The grant was divided amongst two organizations/programs:

MEDICINE HAT PUBLIC LIBRARY

The Medicine Hat Public Library Tic Tac Youth Advisory Committee received \$1500 from the Vital Impact Grant and Criterion Catalyst joined with a further \$1500 bringing the total grant to \$3000. The Tic Tac Youth Advisory Committee designed free programs that run the first Friday evening of each month during the school year. These programs range from the annual Monopoly Tournament to a video gaming event and on a typical night you will see about 47 youth. As with most teens the largest draw for the events is the food. With the growing popularity the Library was noticing a strain on their budget to provide the food and refreshments for the program. For many of the youth it is suspected that the free evening constitutes a much needed meal. "This will go into providing snacks for the very popular monthly teen programs which the library has been hosting for close to 10 years." says the Head of Adult Services for the Library, Hilary Munro.

POVERTY REDUCTION ROUNDTABLE

The newly formed Poverty Reduction Roundtable is the recipient of the remaining \$8500 from the Foundation. Through a partnership with the United Way and the Medicine Hat Housing Society, the Foundation grant has meant a total grant to the Poverty Reduction Roundtable of \$40,000. The seed funding will allow the group to initiate a preliminary research study to determine the living wage in Medicine Hat. This critical step will allow the group to follow up with a strategy to respond to the complexities of poverty within our community.

WATCH THIS SPACE

Another new "Vital" will soon be launched. Vital People is a program, adapted from the Toronto Community Foundations successful program, which will acknowledge and recognize front line non-profit/charitable sector professionals. The first recipients will be announced at the 2012 Medicine Hat Vital Signs® lunch event in October.

VITALITY

Through the introduction of new Vital programs the Foundation works towards improving the quality of life for those in Southeastern Alberta and not just reporting on it. The vitality of our community and the people is paramount to improving the place we call home and the Foundation believes in creating a better community today, tomorrow, forever.

YOUTH IN PHILANTHROPY: GRASSLAND'S REGIONAL SCHOOL DIVISION #6

By Jayne Halladay

On November 22nd, 2011 about 20 youth from each of the five high schools filed into the Grasslands Public School Board room unsure of what the next 2-3 hours would entail. Linda Andreas, Grasslands Youth in Philanthropy Coordinator, proceeded to take the youth through a series of exercises around philanthropy and what the long, awkward word actually means.

phi•lan•thro•py/fəlanThr ʔē/
noun

the desire to promote the welfare of others, expressed esp. by the generous donation of money to good causes.

For the 2011/2012 Youth in Philanthropy session, the Grassland's School District was given the task to decide which charitable organization should receive the \$2100 grant from the Community Foundation of Southeastern Alberta.

Over the course of the day it was phenomenal to watch the students discuss the issues important to them in their community and engage in passionate conversation about what challenges face the community of Brooks and surrounding areas. After the afternoon session each of the five schools was tasked with researching



one or two local charitable organizations that they would like to support. Each group was tasked with visiting the organization to get a tour and speak with the staff. After visiting the organizations the students were then required to develop a presentation building a case why their organization should receive the funding.

On April 18th, 2012 the students reconvened to present their findings to the group. This is when the true magic happened. Each group got up and pled their case for their charitable organization. The presentations were very well done and it was evident that the youth really connected with the organizations they visited. In the end, through an entirely democratic process with very thought provoking conversation, two organizations were selected. Newell Community Action Group and Brooks & District Women's Safe Shelter were allocated with \$1050 each.

It was amazing to watch the process that this group of mixed youth went through and how their passions and compassion came through. It is often seen that youth are overlooked or marginalized simply because of their age and time on earth. This process was really encouraging and proves just how much youth do care about what is going on in their community. It was evident that many of these students will go on to lead in the future and will be positive contributors to society, wherever they call home. The Newell community can stand proud knowing they have these youth and teachers in their community.

This year we were also pleased to have Prairie Rose School Division taking part in the Youth in Philanthropy program. The students at Eagle Butte High School presented the Medicine Hat Habitat for Humanity Society with a \$2100 grant for general operations.



COMMUNITY FOUNDATION GRANT SUMMARY – FALL 2011

DESIGNATED GRANTS

Predetermined designated grants

JOHN IGNATIUS JENNER 4H MULTI CLUB FUND

Trophy for the Grand Champion Calf
\$45

ALEX & JEAN MCDOUGALD

The Salvation Army

\$1140

ALEX & JEAN MCDOUGALD

The Medicine Hat and District Food Bank

\$1215

BIG COUNTRY ALLIED ARTS

Oyen Public Library

\$175

RAWLEIGH FAMILY TRUST

School Districts

\$235

LAVERN & MARY KURPJUWEIT

Health Foundation

\$1745

LAVERN & MARY KURPJUWEIT

Whispering Pines Camp

\$1745

LAVERN & MARY KURPJUWEIT

Church

\$835

LAVERN & MARY KURPJUWEIT

Church

\$835

BRENDA & BROCK MILLIONS

Church

\$835

DESIGNATED TOTAL

\$8805

FIELD OF INTEREST GRANTS

MARGARET HOULSTON

Hydrocephalus Fund

\$180

FIELD OF INTEREST TOTAL

\$3530

(includes those made for Smart & Caring Community Grants)

SMART & CARING COMMUNITY GRANTS

ALBERTA EASTER SEALS

~\$430 from the Megan Wahl Fund

Equipment and Support Services

\$5500

BROOKS FOOD BANK FOUNDATION

~\$970 from the Growing Active Kids Fund

Kids Lunch Program

\$10,000

BROOKS & DISTRICT SENIORS OUTREACH SOCIETY

~\$375 from the Brooks Community Fund

Seniors Outreach Brochures

\$600

FOREMOST MUNICIPAL LIBRARY

~\$545 Wiedeman Family Fund

Children's Area Upgrade

\$5375

PARTNERS FOR THE SASKATCHEWAN RIVER BASIN

~\$1030 from the Environmental Legacy Fund

Educating Youth about Fish Habitat

\$5000

THE CHAMPION CENTRE (BROOKS)

Affordable Supportive Housing for Men

\$2500

NATURE CONSERVANCY

Community Outreach and Awareness

\$2500

COMMUNITIES IN BLOOM (BROOKS)

Restorative Forest Project

\$6500

AMYOTROPHIC LATERAL SCLEROSIS

SOCIETY OF ALBERTA

Client Services

\$6650

TOTAL CF GRANTS

\$44,625

\$3350 of this total is from Field of Interest Funds as noted above

DONOR ADVISED

ZELMOR FUND

Medicine Hat Women's Shelter

\$850

FREEDMAN FUND

Medicine Hat Symphonic Society

\$395

DONOR ADVISED TOTAL

\$1245

AGENCY FUNDS

REDI ENTERPRISES

General Use

\$3755

CORE – GILLES PICHE SCHOLARSHIP

Scholarship for CORE Staff

\$4260

AGENCY TOTAL

\$8015

SCHOLARSHIPS

TX RANCHES (JOHN IGNATIUS)

Medicine Hat Big League Baseball Association

\$1545

TX RANCHES (JOHN IGNATIUS)

Southeastern Alberta 4H Clubs

\$1595

JARDINE BURSARY

Special Areas Scholarship

\$1400

JOE LAYCOCK SCHOLARSHIP

Special Areas Scholarship

\$800

SCHOLARSHIP TOTAL

\$5340

TOTAL DESIGNATED GRANTS = \$26,935

TOTAL FALL GRANTS = \$68,210

COMMUNITY FOUNDATION GRANT SUMMARY – SPRING 2012

SMART & CARING COMMUNITY GRANTS

CORE – CLIENTS ONGOING REHABILITATION AND EQUALITY
~\$1990 from the Claude Bishop Fund
Cafeteria Expansion
\$10,000

CAMP MCCOY ASSOCIATION
~\$5550 from the Rural, Youth and Recreation Fund
Staff Quarters
\$10,000

MEDICINE HAT SYMPHONIC SOCIETY
~\$3500 Medicine Hat 2008 Alberta Summer Games Fund
Scholarships and Tuition Assistance
\$3500

AMYOTROPHIC LATERAL SCLEROSIS (ALS) SOCIETY OF ALBERTA
~\$735 Methanex Social Investment Fund
Equipment Lending Program Capital Assets
\$4784

BIG/BIG SISTERS ASSOCIATION OF MEDICINE HAT
New Case Management System & Computer Upgrade
\$5000

GIRL GUIDES OF CANADA
Elkwater Guide Camp – Upgrading and Equipment
\$2582

CANADIAN RED CROSS
Crisis Connections
\$4784

MIYWASIN SOCIETY OF ABORIGINAL SERVICES (MEDICINE HAT)
Youth Development Program
\$2392

HABITAT FOR HUMANITY MEDICINE HAT SOCIETY
2012 Tool Up
\$3662

TOTAL CF GRANTS

\$46,704 Includes from Field of Interest Funds as noted above \$11,775

VITAL IMPACT GRANT

POVERTY REDUCTION COMMUNITY ROUNDTABLE
Living Wage Study
\$8500

MEDICINE HAT PUBLIC LIBRARY
Tic Tac Program Meals
\$1500

TOTAL VI GRANTS
\$10,000

YOUTH IN PHILANTHROPY GRANTS

GRASSLANDS REGIONAL SCHOOL DIVISION #6
Newell Community Action Group – Transitions Program
\$1050

BROOKS & DISTRICT WOMEN'S SAFE SHELTER SOCIETY
General Operations
\$1050

PRAIRIE ROSE SCHOOL DIVISION # 8 (EAGLE BUTTE HIGH SCHOOL)
Habitat for Humanity – General Operations
\$2100

TOTAL YIP GRANTS
\$4200

DESIGNATED GRANTS

Predetermined designated grants

LEGAL ARCHIVES SOCIETY OF ALBERTA Alberta Legal History
\$225

DONNA MCLEAN, BILL MORRISON, PETER ARMSTRONG, ORV KOPE
Communities in Bloom
\$280

DONNA MCLEAN GRASSLANDS NATURALISTS FUND
Grasslands Naturalists
\$550

DONNA MCLEAN LIBRARY FUND
Medicine Hat Public Library purchase of art instructional material
\$590

DONNA MCLEAN MUSEUM FUND
Medicine Hat Museum and Art Gallery school art annual award
\$550

DONNA MCLEAN SPCA FUND
Medicine Hat SPCA
\$180

DONNA MCLEAN PARTICIPATION HOUSE – TORONTO FUND
Participation House in Markham, their choice-use of funds
\$410

DONNA MCLEAN SOUTHERN ALBERTA MEDIC-AIR SOCIETY FUND
Emergency medical helicopter for Southern Alberta
\$820

DONNA MCLEAN WAR AMP FUND
CHAMP program
\$820

DONNA MCLEAN ONTARIO COLLEGE OF ART AND DESIGN FUND
Scholarship to support life and portrait study
\$820

THOMAS AND CONSTANCE SISSONS
Salvation Army
\$250

TX RANCHES (JOHN IGNATIUS)
MH Big League Baseball Association
\$6019

DESIGNATED TOTAL
\$11,514

AGENCY FUNDS

FRIENDS OF MEDALTA
General Operating Expenses
\$810

BIG BROTHERS/BIG SISTERS
General Use
\$70

FRIENDS OF THE FAMILY FOUNDATION
General Use
\$38

UNITED WAY
General Use
\$38

YMCA
General Use
\$1735

CORE
General Use
\$45

CORE – JASON MAUCH SCHOLARSHIP
Support for Art Program
\$210

MEDICINE HAT PUBLIC LIBRARY
General Use – Harry & Lucy Cyster Trust
\$185

CANADIAN MENTAL HEALTH
General Use
\$365

AGENCY TOTAL
\$3496

DONOR ADVISED GRANTS

FROST FAMILY FUND
Selected by Family
\$680

NIWA FAMILY FUND
Acadia Valley Arena
\$10,000

DONOR ADVISED TOTAL
\$10,680

SCHOLARSHIPS

ZIRCA UKRAINIAN DANCE ENSEMBLE
MHSD#76/MHCBE
\$790

LIONS CLUB OF IRVINE
Irvine School
\$180

DR. F.W. & HARRIET GERSHAW FUND
Scholarship chosen by the family
\$480

VALLI FAMILY SCHOLARSHIP FUND
Grasslands Public Schools
\$2075

DROWING FORD GRAZING ASSOCIATION
Prairie Rose School Division
\$850

JAMES AND JOHN MCCONNELL
Chinook School Division – Nursing and Trades
\$13,440

BASEBALL CANADA CUP
To be awarded in September
\$1321

FRENCH IMMERSION
MHSD#76
\$49

CHIEF GORD EARL LEADERSHIP LEGACY
FUND
Scholarships to all Medicine Hat Area
School Districts
\$1080

SCHOLARSHIP TOTAL
\$20,265

FIELD OF INTEREST

MEDICINE HAT 2008 ALBERTA SUMMER
GAMES
As decided by the committee
– Hockey Day Bid
\$1545

SAAMIS TEEPEE ASSOCIATION
Support for Aboriginal Cultural Events
\$1610

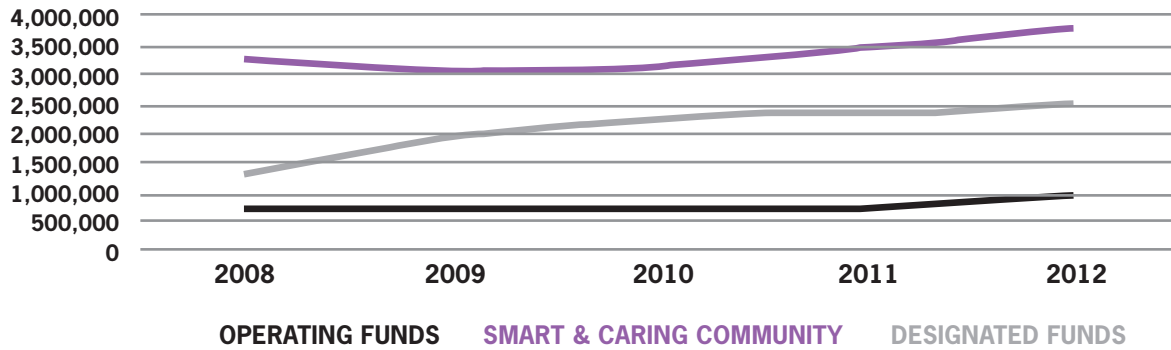
TOTAL FIELD OF INTEREST
\$14,930

Total Grants allocated through Community
Grants Program
\$11,775

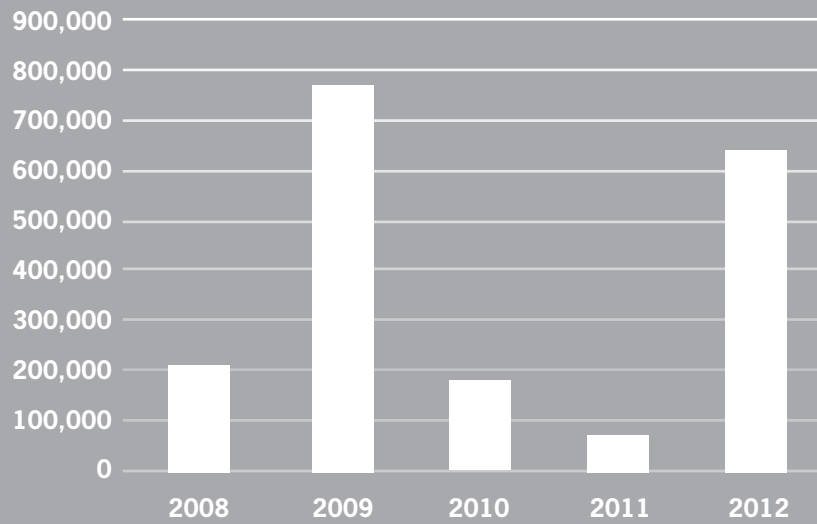
TOTAL DESIGNATED GRANTS = \$86,860

TOTAL SPRING GRANTS = \$121,789

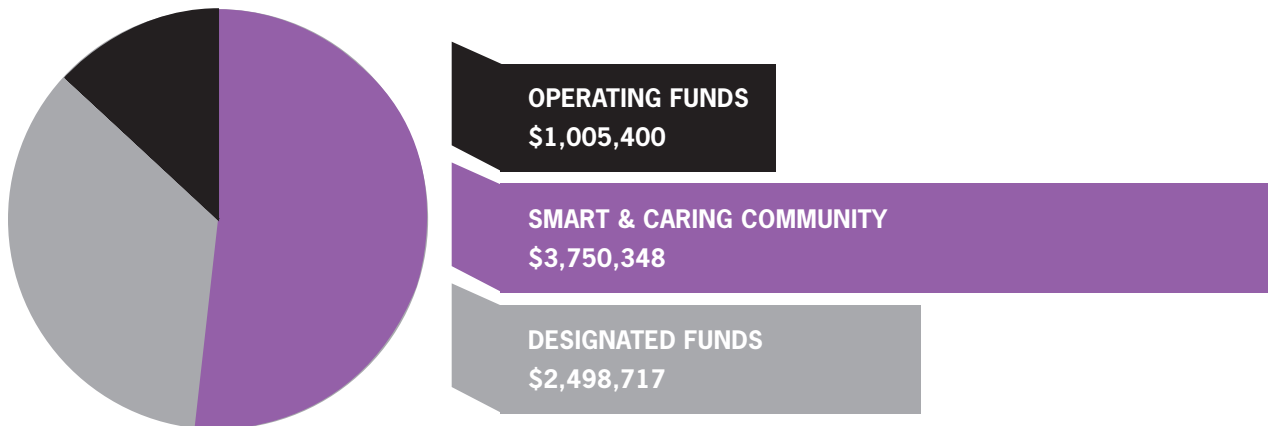
MARKET VALUE TOTAL ENDOWMENT FUNDS - JUNE 2012



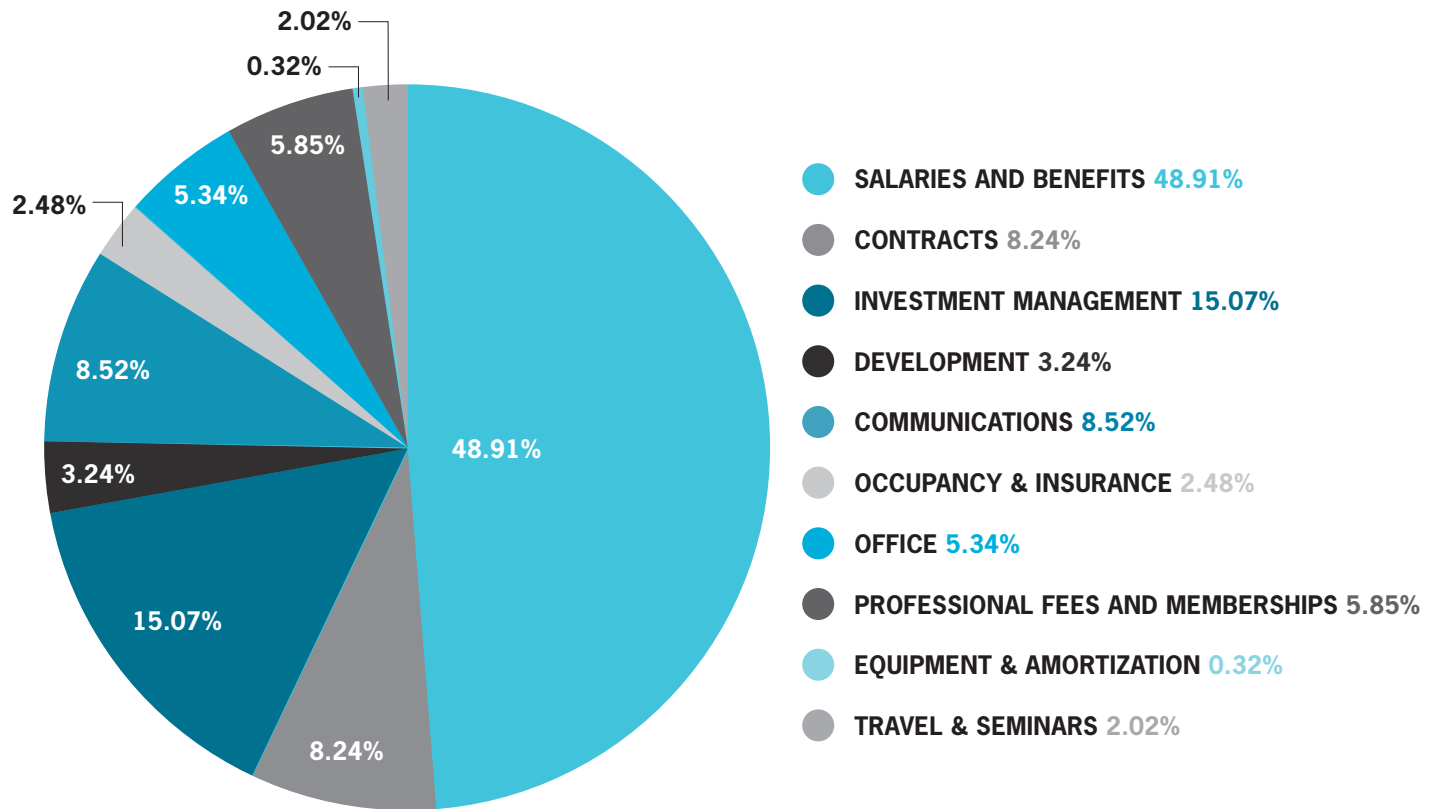
TOTAL DONATIONS BY YEAR



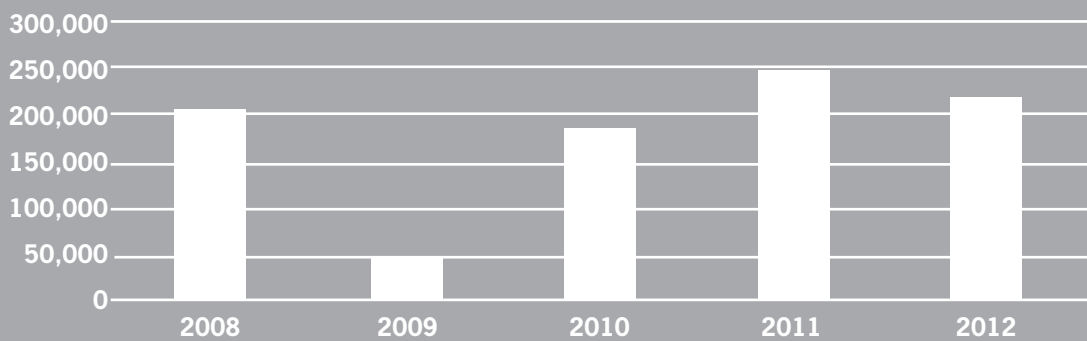
TOTAL ENDOWMENT FUNDS - JUNE 2012



2011/2012 ADMINISTRATION COSTS = \$268,084



TOTAL GRANTS - JUNE 2012



2011 LEGACY CLUB

Kenneth Blair Professional Corp.
 Kelly Byers
 David & Karen Carter
 Wayne & Bernie Chesley
 Michael Christie
 William & Bobbi Dearborn
 Ryan Dorton
 Craig Elder
 Al & Tanis Garden
 Doug & Shirley Heine
 Ben & Kathy Hern
 Bob & Judy Herring
 Thelma Johnston
 Patrick Knight
 Uwe and Anke Krickhahn
 James & Sharran Kungel
 Mark Lewall Professional Corporation
 Sandy & Jane MacKay
 Phyllis McLaughlin
 Ian & Phyllis McLaughlin
 Bill & Marilyn Milroy
 David & Jean Nitchke
 Lloyd and Audrey Olsen
 Jacquie Penner
 Tom and Cathy Peter
 Rawleigh Family Trust
 Ted & Donna Rodych
 Lucy Rollheiser
 Murray & Margaret Sihvon
 Jerry & Diane Smith
 Shann P. Snedden
 Jeff and Miriam (Snookie) Welling
 Jim & Anne White
 Elaine Wiedemann
 Harry & Eleanor Zeller
 Bill Taylor
 Rod Wutch
 Alberta Chambers of Commerce
 All Nations Optimist Club
 Canadian Fertilizers Limited
 Canadian Western Bank Group
 Criterion Catalysts & Technologies
 Canada Inc.
 Gas King Oil Co Ltd
 Hargrave Ranching Co. Inc.
 Murray Cattle Co
 River Dental Clinic
 Source for Sports
 Sun Life Financial
 Telus

HERITAGE MEMBERSHIP

The Community Foundation of Southeastern Alberta constantly strives to strengthen our role of improving the quality of life for residents throughout our area. Since 1992 we have developed permanent endowment funds; distributed responsible grants to local charities; and proactively engaged in community life.

During Alberta's centennial year in 2005, we introduced the "Legacy Club" which continues as a simple unique and lasting way for supporters to help achieve the goals of the Community Foundation with a cash donation to an endowment fund.

As an extension of the Legacy Club, we would like to recognize and salute those who have taken their commitment to the Community Foundation a step further by becoming a "Heritage Member" of the Legacy Club!

Heritage Membership is exclusive to those who have included our Community Foundation in their future plans with a gift through a bequest, life insurance, trust arrangement or other asset of choice.

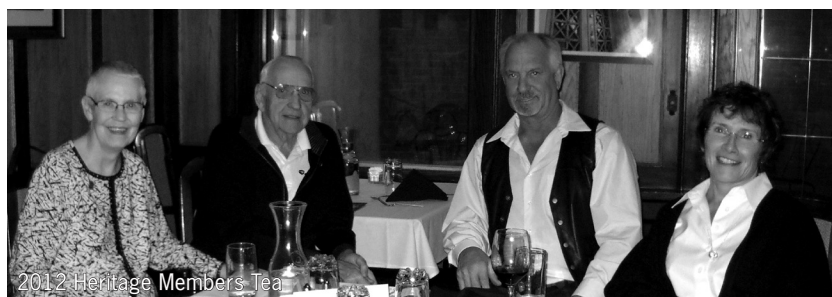
Heritage Members have made a conscious decision to build today into a better tomorrow...and deserve to be recognized and honoured for their foresight and planning. They believe in the core values and potential of our community today and further believe that a structured gift in a Community Foundation endowment fund will ensure an even better, more vibrant future for generations to come.

ESTATE GIFTS RECEIVED

The following planned gifts were received by the Community Foundation during 2011-2012:

Estate of Marianne Kurpjuweit Estate of Nicolas Bachmeier Estate of Walt Sauve

Thanks to those that have made the generous and conscious decision to leave a gift to the Community Foundation. May it be a small condolence to these donors' loved ones that a legacy has been left, Forever.



Our warmest appreciation goes out to the following Heritage Members:

Kathy Hern	Dr. Ted Valli	Marjorie Saunderson
Ben Hern	Honourable Rob Renner	Dr. Shann Snedden
Mike Christie	Todd O'Reilly	Tanis Garden
Ann Christie	Darlene O'Reilly	Walter Sauve*
Adele Armstrong	Lavern Kurpjuweit	Alex McDougald*
Gilda Valli	Mary Kurpjuweit*	Anonymous 7
Dr. Al Garden	Ann Bernhardt	Dr. Bill Taylor
Donna MacLean	Otto Bernhardt	Nicolas Bachmeier*
Keri Bradford	Bill Bauman*	Patrick Knight
Nelson Hogg	Doug Heine	Kimberly Knight
Sharon Hogg	Shirley Heine	Mata Rinke
Barry Neubauer	Robin Houlston	David Panabaker
Janet Neubauer	George Greenfield	Debbie Panabaker
Penny Krassman	Gary Stimson	Elizabeth Mueller
A. Murray Sihvon	Anita Stimson	Brian Rothwell
Margaret Sihvon	Bill Roberts	Gwen Rothwell
John Summerbell	Lavina Roberts	Marion Bauman
Freddie Summerbell	Donald Saunderson	* denotes deceased

BOARD OF DIRECTORS 2011-12

Mrs. Cory Baksa – Chair
Dr. Nora Way – Vice-Chair
Mr. Les Erickson – Secretary
Mr. Ryan Dorton – Treasurer
Ms. Abbe Barton
Mrs. Elaine Beierbach
Mr. Dennis Egert
Mr. R.W. Rick Redmond
Mr. Pat Knight
Mr. Gerry Labas
Mr. Bernie Leahy
Mr. Jason Melhoff
Mr. Todd O'Reilly
Ms. Jacquie Penner
Mr. Jeff Welling

BOARD OF DIRECTORS 2012-13

Mr. Gerry Labas – Chair
Dr. Nora Way – Vice-Chair
Mr. Ryan Dorton – Treasurer
Mr. Todd O'Reilly – Secretary
Mrs. Elaine Beierbach
Mr. Luke Day
Mr. Dennis Egert
Mr. Darren Folkersen
Mr. Pat Knight
Ms. Tiffany Krinke
Mr. Rick Redmond
Mr. Warren Stark
Mrs. Phyllis Verhoeven
Mr. Jeff Welling
Mr. Don Weisbeck

COMMUNITY FOUNDATION STAFF

Mike Christie
Executive Director
Marlene Watson
Office Manager
Lee Spracklin
Communications Coordinator
Jayne Halladay (Maternity Leave)
Community Impact Coordinator

COMMITTEE MEMBERS 2011-2012

FUND DEVELOPMENT

Dr. Nora Way - Chair
Pat Knight
Todd O'Reilly
Terry Chapman
Ryan Jackson
Jeff MacFarlane
Gerry Nadeau
Mike Christie - Staff
Marlene Watson - Staff

INVESTMENT

Ryan Dorton - Chair
Dennis Egert
Pat Knight
Jason Melhoff
Todd O'Reilly
John Frame
Al Garden
Ted Rodych
Jack Snedden
Peter Wilde
Mike Christie - Staff

VITAL COMMUNITY DEVELOPMENT & VITAL SIGNS

R.W. Rick Redmond - Chair
Elaine Beierbach
Pat Knight
Karen Blewett
Chris Deering
Tara Williams
Mike Christie - Staff
Jayne Halladay - Staff

MARKETING

Abbe Barton - Chair
Ryan Dorton
Jason Melhoff
Jacquie Penner
Susan Guerra
Mike Christie - Staff
Jayne Halladay - Staff

GRANTS

Gerry Labas - Chair
Abbe Barton
Dennis Egert
Jeff Welling
Debra Best
Pat Dietrich
Will Greenwood
Corrina Kay
Carolyn Kawan
Michelle Kohlman
Sharran Kungel
Dr. Linda Rossler
Ken Serr
Mike Christie - Staff
Jayne Halladay - Staff



2011/2012 Board of Directors

BOARD ATTENDANCE RECORD

BOARD MEMBER	BOARD TOTAL	COMMITTEE MEETING ATTENDANCE*	EVENT ATTENDANCE
Cory Baksa	7/9	5/7	2/2
Nora Way	8/9	10/12	1/2
Ryan Dorton	7/9	15/18	2/2
Les Erickson	4/9	8/17	0/2 (stepped down mid year)
Jacquie Penner	8/9	5/7	1/2
Pat Knight	7/9	21/23	2/2
Jeff Welling	6/9	4/5	2/2
Abbe Barton	8/9	7/12	2/2
Gerry Labas	6/9	5/5	1/2
Todd O'Reilly	7/9	9/9	1/2
Rick Redmond	6/9	10/10	0/2
Dennis Egert**	8/9	7/9	0/2
Elaine Beierbach**	5/9	5/10	1/2
Jason Melhoff**	6/9	9/11	1/2
Vacant position			

*Each Board Member sits on different committees, thus a variety of commitments to the number of volunteer time.

**new Board Member, attendance to committee meetings tends to be less due to a lag time before deciding which committees to commit to.

SMART & CARING COMMUNITY FUND

\$1000+

Caragata Quintin Family
Dan, Barb and Quirina Thompson Fund
Panabaker Family Fund
Henry Haugan Family
Jamie & Janet White
Ken & Sharon Zollner
Jeff & Miriam Welling Fund
Classic Construction Ltd
Source for Sports
- Brian and Milvia Bauman Fund
Dr. Scott Van Dam
Financial Solutions-Vern Hyde
Vance & Ruth Andreas & Family
Smitty's Family Restaurant
Stephanie Churla & Family
Sandy Kapeller Family(RE/MAX)
Anonymous - Arthur
Fred & Heather Hall Family
Adolf, Joan & Andrea Seiler
Bevan Family
Brad & Marlene Lay
Bryan & April LaBette Family
Cecile & Dave Jones
Cindy Guttormsen
City Plymouth Chrysler
Co-op Rainbow Women's Guild
Corporate Business Equipment
Donald & Mary Ann Owens
Dr Ken & Deanna Siemans Family
Dr. J.P. Gallimore
Dwayne & Pat Dietrich Family
Edward & Marni Jakubowsky
Emma Good
George & Edna Finch & Family
Grant & Colette Bright Family
Howard & Ella Stotz Family
J&R Zachary & G&S Guerra
J.R. Aitken & Family
James & Kathleen Foy
James C. & Norah Miller
James C. Fisher
Jeraj Family
Jim & Anne Liboiron Family
Kawan Family
Kay & Roy Olsen
Ken & Valerie Sauer Family
Kevin Fischer Family
Les Mehrer Family
Malcolm & Janis Pritchard & Family
Mark & Kathy Carry
Marvin Woefle Family
Meryl & Janis Goodfellow
Nelson & Sharron Hogg
Patty Horner
Paul & Judy Howe
Peter & Patricia Trzaska & Family
Peter Best Professional Corp.
Randy & Cathie Catalano
Roy & Dianne Hanson

Shane & Michelle Kohlman & Family
Suidan Family
Tay Hashizume Family
Tokle Family
TransCanada PipeLines Ltd.
V. Saujani Professional Corporation
Venumbaka Family
Vicki & Bob McCaig Family
Wayne Baum
Wilbert & Rose McKinley
Paul & Kim Murray and Family
Anonymous - MacLean
Dr. E. LaVar & Elaine Jones
Leon's Schile/Towner Famil
Marion McRoberts & Family
Allan & Betty McClelland Family
Brenda & Corrie Stolz Family
South Country Glass
Pat & Bruce Cooke Family
Tony Soo Professional Corp.
Daniel J. Smith Family
Mark Reinhardt Family
Brian Zollner Memorial
Peter & Evelyn Wilde Family
Ron & Sharon Getz
C.C. & J. Evangelos Family
Sihvon Carter Fisher & Berger LLP
Carpet One Fund
Clarence and Ruth Heringer Fund
Ada & John Hammel
Anonymous - Armstrong
Anonymous - Hunt
Craven-Hall Fund
Ken Biemans
Raymond Gill
Chinook Club of Irvine
Bauman Fund
Glen & Bonnie Christensen
Roy & Leona Neubauer
Albert & Yvonne Anctil Family
D. Brand & Family
Peter and Marg Mazerolle Fund
Bill Morrison Memorial Fund
Couillard Family
KR (Bob) & Joyce Lentz
Bruce, Janice and Jayne Dynes
Dr. H. F. (Mac) MacKenzie Family
Ken & Rita Graumans Family
Barry & Janet Neubauer
Don & Christa Cameron
Dr. Nick Douvis Family
Lt. G. "Bud" Olson Memorial
Pahl Livestock Ltd.
Conrad Sonntag Fund
Patterson/Harding Family
Gordon H. Sissons
Clem & Kathy Kuntz
Gene & Linda Weber
Rick & Bonnie Hanson
John Ignatius Memorial Fund
Nora Way Fund
Thomas and Constance Sissons
(Community)
Jacquelyn Penner Fund

Bill & Bobbi Dearborn
Curtis Ensminger & Jan Tate
Wilkinghoff Family
George & Vera Kowalchuk
Wenzel Family
Ethel Helgeson
James & Sharran Kungel
BT Honda
- Wayne Knodel & Eileen Lange
Transit Paving
- Dean Dinning & Harvey Neigum
Wutch & Giddens Families
Jack & Carol Snedden & Family
Nandy Family Fund
Short Grass Ranches Ltd.
Ed & Bonnie Hole
Fred & Clara Weinheimer & Family
Art's Excavating
John & Shelly McLeod Family
Johnston, Morrison, Hunter & Co
Jerry & Diane Smith
Perry & Lois Yanke
Porter Family Fund
Kent & Patsy Walker
Rob & Sharon Lefever
Brian, Gwen & Erin Rothwell
Randy & Linda Lehr Family
Pat Valley Memorial Fund
Don Weiss Family
Park City Toyota
Bill & Marilyn Milroy
Susan & Ken Feick Family
Elder Family
Tom & Cathy Peter
Bright's Prosthetic Laboratory Fund
Bill Bauman Memorial Fund
Richard & Lenore Kowalchuk Family
Stein Family Fund
Alex McDougald Memorial
Comm Family Fund
Don Morris/Gas King Memorial
Hargrave Ranching
Phyllis McLaughlin
Gwen & Harold Congram
Krickhahn Family
Burns,Valkenburg,Schwab
Bill & Marg Taylor and Family

\$5000+

Roy & Peggy Archibald
David & Jean Nitchke & Family
Arnold & Thelma Johnston
Dr. Murray & Beryl Cowan
J & B David Fund
Tom and Emmy Droog Fund
Rotary Club of Medicine Hat Sunrise
(Community)
Kelly & Barb Byers Family
Ian & Phyllis McLaughlin
Altwasser Family Fund
Telus
Harry & Eleanor Zeller Family
Criterion Catalysts
Les Little Family

Carter Family Fund
Patzner
Archie & Joan MacPhail Family Fund
Bob & Judy Herring
Kathy Mandeville and Ben Hern Fund
Valley Family

\$10,000+

MacKay Family Fund (Community)
Al & Tanis Garden and Family
Derbyshire
Wutch Family Fund
Audrey & Lloyd Olsen
Ann Yuill
Doug and Brenda Nerland
Un-named
White Family
Canadian Fertilizers Community Fund

\$20,000+

John & Mata Rinke
Jeff Peckham Family Fund
Doug & Shirley Heine Family
Vera Bracken Fund
Donna MacLean Fund

\$30,000+

Lewall Family
G.W. & Lil Murray, Mack & Anne Murray,
and Families

\$40,000+

Alex & Jean McDougald
Dean & Edna McKelvie
Wayne & Bernice Chesley

\$100,000+

R.Hargrave and C.J. Mitchell Fund
Anonymous - Fisher
Lavern & Marianne Kurpuweit
(Community)

\$500,000+

Donald and Milta Hawthorne Fund

\$1,000,000+

J.P. Ignatius

YOUTH IN PHILANTHROPY

\$1000+

TD Canada Trust

\$5000+

Snedden/Mayer Family

\$10,000+

Dr. Ken Blair Professional Corp.

\$40,000+

Lavern & Marianne Kurpuweit Fund

\$175,000+

DESIGNATED FUNDS

UNDER \$5000

Mack Higdon, Austin & Ethel Currie
John Ignatius Jenner 4H Multi Club Fund
Armstrong & Havard-Rotary Music Festival
Cultural Alliance
Merelie & Melodie Armstrong Memorial

\$5000+

Big Country Allied Arts Association Fund
Thomas and Constance Sissons (Designated)
Donna MacLean S.P.C.A. Fund
Bill Sellhorn Memorial Fund
Alberta Legal Heritage
Theresa Kope Memorial Fund
Communities in Bloom
Rawleigh Family Fund

\$10,000+

Donna MacLean Participation House - Toronto Fund
Donna MacLean Esplanade Education Fund
Donna MacLean Museum Fund
Donna MacLean Grasslands Naturalists Fund
Donna MacLean Library Fund

\$20,000+

Donna MacLean Ontario College of Art & Design
Donna MacLean Southern Alberta MedicAir Society
Donna MacLean War Amps Fund
Brock and Brenda Millions

\$30,000+

Alex & Jean McDougald - Salvation Army Fund
Alex & Jean McDougald - Food Bank Fund

\$40,000+

TX Ranches - Baseball
TX Ranches - 4H

\$100,000+

Rotary Club of Medicine Hat Music Festival Fund

\$140,000+

Lavern & Mary Kurpuweit Fund

AGENCY FUNDS

Arts & Heritage Fund
Big Brothers/Big Sisters Association
of Medicine Hat
C.O.R.E. Association
Canadian Mental Health Association
-Alberta Southeast Fund
Friends of Medalta Society Fund
Gilles Piche Memorial Fund
Jason Mauch Memorial Fund
Medicine Hat Family Service Fund
Medicine Hat News Santa Claus Forever Fund
Medicine Hat Public Library

Rehabilitation and Employment
for Developing Indep
United Way of Southeastern Alberta
YMCA of Medicine Hat Heritage Fund

FIELD OF INTEREST FUNDS

\$5000+

Brooks & Area Community Fund
Margaret Houlston Hydrocephalus Fund
Savanna Drilling

\$10,000+

Mayor's Community Fund
Megan Wahl Memorial
Roy and Elaine Wiedemann

\$20,000+

Methanex Social Investment Fund
The Zelmor Fund
Growing Active Kids
Environmental Legacy Fund

\$40,000+

Saamis (Medicine Hat) Teepee Association Fund
Claude Bishop Fund

\$100,000+

Medicine Hat 2008 Alberta Summer Games Fund

\$150,000+

Rural Youth and Recreation Fund

DONOR ADVISED FUNDS

\$10,000+

Freedman Fund

\$15,000+

Frost Family Fund

\$30,000+

Niwa Family Fund

SCHOLARSHIP FUNDS

UNDER \$5000

Eugene and Ruth Eaton Scholarship

\$5000+

Sara Michaud Scholarship

\$10,000+

Dr. F.W. & Harriet Gershaw Fund

\$20,000+

Zirka Ukrainian Dance Ensemble
Loretta and Joe Laycock Scholarship Fund
Drowning Ford Grazing Assoc.

\$30,000+

Chief Gordon Earl Leadership Legacy Fund

\$40,000+

Jardine Bursary Fund
Medicine Hat Canada Cup Society
Valli Family Scholarship Fund (The)

\$350,000+

James & John McConnell Scholarship Fund

MANAGED FUND

\$17,202.40

Rotary Club of Medicine Hat

OPERATING FUNDS

UNDER \$2000

Rotary Club of Medicine Hat Sunrise
Royal Bank of Canada's Employee
Volunteer Program
McCoy Safe Grad 2005
Joan & Walt Sauve Families
Knight Family Fund
Dorton Family Fund
Frew/Wannamaker Family
MacKay Family Fund

\$2000+

Myers Norris Penny Fund
Snedden/Mayer Family
White Family
Investors Group

\$5000+

Canada Trust Fund
Canadian Fertilizers
Gordon H. Sissons
Mayor Ted Grimm Roast Fund

\$10,000+

Board and Staff Fund
Bauman Fund

\$20,000+

William J and Anne Morrison
Operating Endowment Fund

\$50,000+

Walt Sauve Memorial

\$150,000+

Estate of Dorothy Joan Lehr
Nicholas and Leo Bachmeier Memorial Fund

\$500,000+

John P. Ignatius Operating Endowment Fund

MEDICINE HAT'S **Vital**Signs®

A SPECIAL THANK YOU TO OUR 2011 SPONSORS:



THANK YOU TO THE FOLLOWING
FOR MAKING THIS PUBLICATION
POSSIBLE:



The sponsors for Vital Signs 2012 will be recognized in our 2012/2013 Annual Report.



SMART & CARING
COMMUNITIES



CONTACT US

104, 430 – 6th Avenue SE

Medicine Hat, AB T1A 2S8

P 403-527-9038

F 403-527-9204

E info@cfsea.ca

W www.cfsea.ca



@cfsea

@vitalsignsmh

