

Summer 2020

VitalNews

DONOR PROFILE

John and Mata Rinke

RESPONSE TO COVID-19**REGIONAL DEVELOPMENT****VOLUNTEER HIGHLIGHT**

Clint Thacker

**FAREWELL TO CHRIS CHRISTIE!**

What a joy the last 3.5 years has been working for CFSEA! After almost 40 years in the charitable sector, I often joked that I wished my last job would be giving money away instead of always looking for it. A dream come true - helping to disburse over a million dollars! Even though looking for money was still a part of being the Foundation Executive Director, it was one of the best aspects of the work - meeting donors, exploring their stories and philanthropic perspectives, and connecting them to their favourite charities.

I am full of such admiration and appreciation for the donors, staff, board members, committee volunteers, and community partners that have made this experience so rewarding. A special thank you to Michael Ancil and his stellar leadership and support as board chair; and to Niki and Barb who were with me almost the entire journey. We accomplished a lot and had great fun along the way.

Sue - I wish you great success as you now step into the E.D. position and continue the momentum of the Foundation. It's the best job ever!

Retirement seems a bit daunting, but I hope to enter more road bike races with Andy, improve my French and piano playing, but especially family and travel when the world opens up again.

The Foundation will always be THE charity for me and I'll continue to support it in ways big and small in the future. Thank you for making my time at the Foundation an incredible experience.

With gratitude and hugs,

Chris

DONOR STORY: John & Mata Rinke

Every so often, our Foundation is the recipient of an extremely generous bequest that is a true game changer for charities in southeastern Alberta. Here is the story of two individuals who have done just that – today, tomorrow, forever!

The story of John and Mata Rinke began on June 30, 1942 when they eloped and began their new life together on a farm near Eastend, Saskatchewan. John was a man that personified respect, dignity, honor and integrity. Mata was proper, dignified and down to earth. She believed that “if you don’t have anything nice to say, don’t say anything at all”.

John was a lot like John Wayne, a proud man who had the strong silent image that always looked for the good in people. He loved nature and the outdoors – and his cattle ranch was his pride and joy. Mata was a hard worker who in the early years, carried out the job of a hired man as money was tight. She had a soft spot for animals, seniors, and kids even though she and John did not have their own children. Mata always invited people for Christmas dinner when they had nowhere else to go.

For most of John’s life, he was a rancher and businessman. Buying properties and fixing them to his high standards, selling them and moving on to his next venture. Both John and Mata were hard working individuals and their success presented itself in the quality of their work.

John and Mata’s philanthropic journey with the Foundation began on March 9, 2000, when they established a Charitable Remainder Trust listing CFSEA as the beneficiary. When John passed away on August 29, 2003, Mata continued their passion as philanthropists and became a Heritage Club member in 2007. At that time, Mata also established the John and Mata Rinke fund designated to the Smart and Caring Fund which supports the community’s greatest needs.

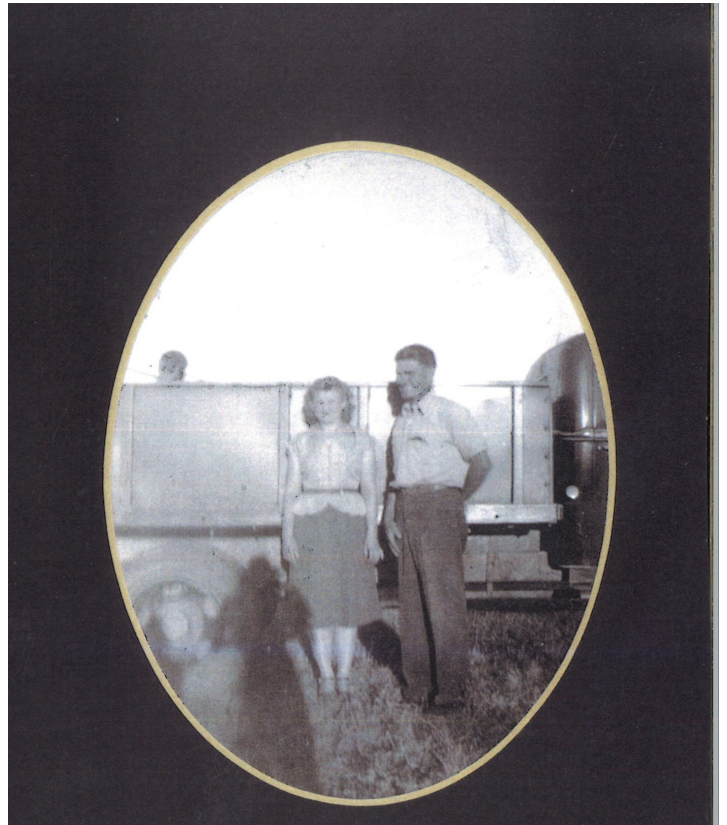
Mike Christie, former Executive Director with CFSEA reflects on his inspiring interactions with Mata. *“I was introduced to Mata Rinke from Ryan Dorton, who, at the time, was treasurer of the Foundation. Mata was an intelligent, thoughtful, and unassuming person who was obviously passionate and committed to her community. A very discerning person, she was thoroughly motivated by the operational concept of the Foundation although she still had lots of questions. Over the subsequent years, her trust and faith in the Foundation was enhanced as the organization continued to grow and increase the scope and size of its various grants programs. She appreciated that over the long term, no other charitable gift would have the same impact as a gift to the Foundation. The result is the amazing legacy she had left to this community from which we will all benefit.”*

Story continues

CONTINUED DONOR STORY: John & Mata Rinke

Ann Srubowich and Linda Norrish, dear friends of the Rinkes, reflect on their memories of John and Mata.

"Mata and John were always so good to us, their family and friends. Aunty Mata's home was a safe haven for us to stop in at any time, knowing coffee and tea would always be on. Johnny was always busy but never too busy to take the time to visit with those closest to him. It warms our hearts knowing their legacy will live on forever through the Community Foundation; supporting the communities that meant so much to John and Mata"



The memories of John and Mata will live in the hearts of many and our community will feel their presence forever from the kindness, generosity, and impact of their legacy. We are forever grateful for their contributions to CFSEA and extremely appreciative for the bequest of \$2.75 million, which will have an impact on southeast Alberta for many generations.

RESPONSE TO COVID-19

At the Community Foundation we are committed to supporting our communities. In order to address the immediate and urgent needs arising throughout our region, CFSEA re-purposed the Spring 2020 granting funds. This shift enabled us to provide funds for frontline charitable organizations dealing with those most affected by the pandemic. **A total of \$106,259 was awarded to charities across the region addressing mental & physical health, youth, seniors, food insecurities and domestic violence.**

Considering these unprecedented times, CFSEA also established a **COVID-19 Response Fund for SE Alberta** that is being distributed to local charities for other essential services to our most vulnerable populations. These funds are providing much needed resources to help organizations with their response efforts on a medium to long-term basis. **This fund would not be possible without the generous contributions made by community supporters, donors, the City of Medicine Hat, the Government of Alberta and the Stay-at-Home Gala proceeds.**

"Between April 15 and May 31, donations made to the response fund were enhanced by the Government of Alberta's Charitable Giving Donation Program. The total amount received from the Government Alberta was \$81,620. These additional funds are vital in supporting our communities." - Executive Director, Sue Edwards

We are working collaboratively with community partners, charities and municipal leaders throughout southeastern Alberta to ensure a coordinated and responsible approach to help mitigate the impact of the pandemic on our community.

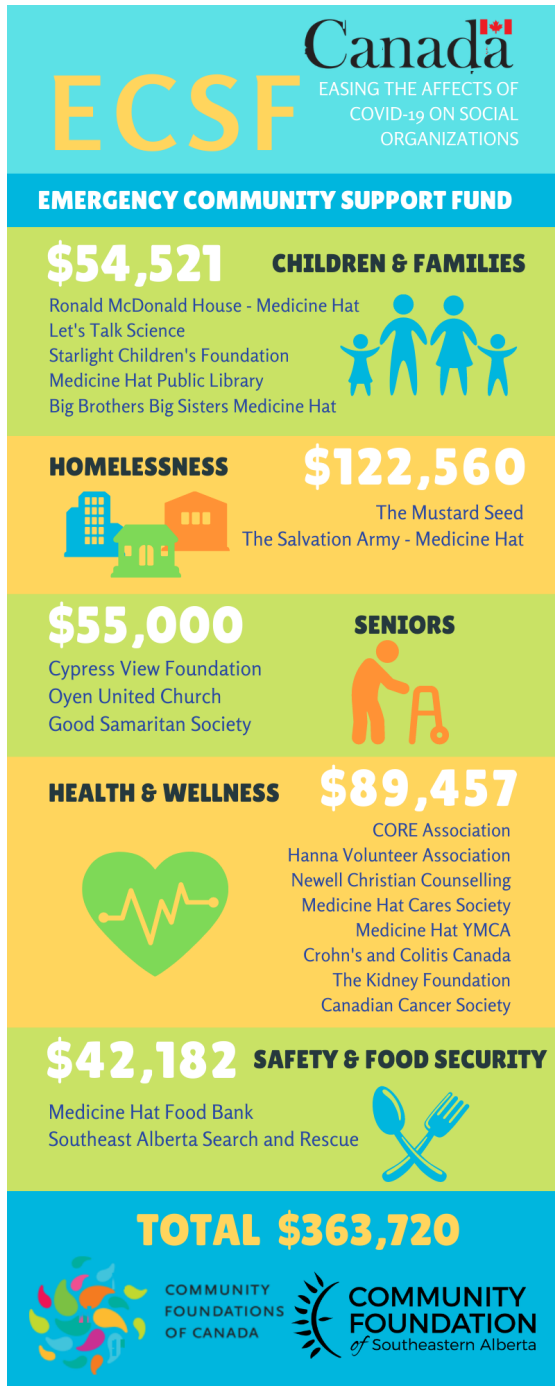
The Community Foundation's first priority is, and has always been, supporting a vibrant, healthy and caring community. Addressing the effects of the pandemic through the Response Fund for SE Alberta will help to ensure the continued health and well-being of southeastern Alberta.

CONNECT.
GIVE.
IMPACT.



**COMMUNITY
FOUNDATION**
of Southeastern Alberta

RESPONSE TO COVID-19 - CONTINUED



Launched on May 19, 2020, CFSEA invested (an additional) \$363,720 through the Emergency Community Support Fund (ECSF) towards local charities supporting populations experiencing heightened vulnerability during this crisis.

CFSEA has now distributed the full funding available to our community through the ECSF and will no longer be accepting applications. Since the start of the pandemic, charities and non-profit organizations have been leading the charge to assist those who need it most in the fight against COVID-19.

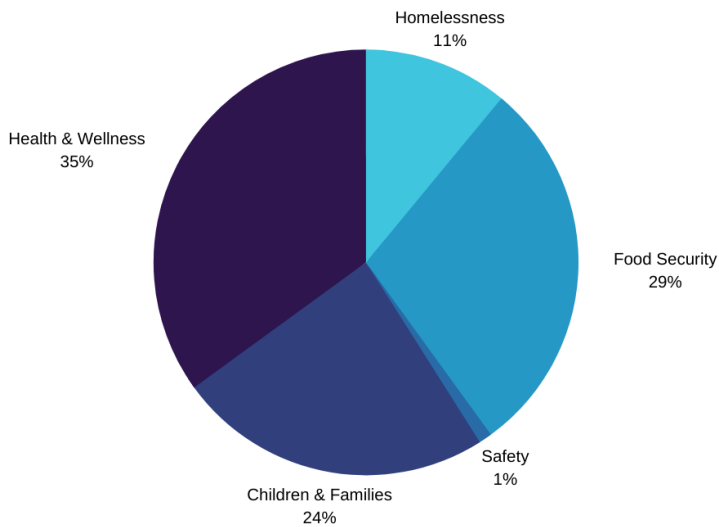
We are proud to have partnered with [Community Foundations of Canada](#) and the Government of Canada to deliver the [Government of Canada's Emergency Community Support Fund \(ECSF\)](#) across south-east Alberta.

Thank you to our incredible volunteer grants committee for their commitment in assisting with this initiative!

"Our grants committee reviewed applications for the ECSF on a weekly basis and worked closely with Municipal leaders, funders and community partners to ensure the greatest needs were being addressed in the communities we serve across southeastern Alberta." says Grants Committee Chair, Cheryl Pocsik

SPRING 2020 RE-PURPOSING GRANTS

Funded Priority Granting Areas



We continue to be inspired by local charities and non-profit organizations in their initiatives to assist our most vulnerable populations in the wake of the pandemic.

To learn more about the current funding opportunities please contact our office at 403.527.9038 or admin@cfsea.ca



SPRING 2020 RE-PURPOSING GRANTS

Medicine Hat & Area

Canadian Mental Health Association - SE Alberta Region	\$10,000
Medicine Hat Family Service	\$8,000
Medicine Hat Be YOUTH Centre	\$2,500
Community Food Connections Association	\$1,100
Aj's Loan Cupboard	\$7,229
Big Brothers Big Sisters Medicine Hat	\$7,000
North Flats Neighborhood Association	\$10,000
Redcliff Action Society for Youth	\$4,500
Total	\$50,329

Brooks & District Community Fund

The Society of St. Vincent de Paul	\$10,000
Brooks Food Bank Foundation	\$8,000
Brooks & District Victim's Assistance	\$2,000
The Champion's Centre - Brooks	\$6,000
SPEC Association	\$10,000
Crossroads Clinic Association	\$1,430
Total	\$37,430

Prairie Crocus Community Fund

Oyen & District Food Bank Association	\$5,000
Hanna Food Bank Association	\$7,000
Empress Friendship Centre	\$1,500
Total	\$13,500

Rural Community Fund of Forty Mile

Forty Mile Regional FCSS	\$5,000
Total	\$5,000

TOTAL REPURPOSING GRANTS
\$106,259.00

NEWS FROM BROOKS AND DISTRICT COMMUNITY FUND

The impact of COVID-19 on Brooks & District was felt by everyone including local non-profits. They've had to adjust policies, procedures and demand for the services they provide which experienced a dramatic increase due to the rapid spread of the pandemic in the area. **The CFSEA's Spring Repurposing Grant provided \$19,000 to four local charities which supported the influx of need across the district.**

The Brooks Food Bank Foundation received a \$6,000 grant to purchase additional emergency food hampers. The Champion Centre received \$6,000 which was used to maintain a safe & clean environment. St. Vincent de Paul is a non-profit organization which operates out of St. Mary's Church. They received \$10,000 for emergency food hampers, which helped ease the backlog faced by the Brooks Food Bank. \$2,000 was awarded to the Brooks & District Victim's Unit Association, the funding was used to take care of the increased number of victims fleeing from domestic violence. Brooks & District Victim's Unit Program Manager Anne Muraya, was able to provide an impact statement about receiving the funding.

"We have been extremely grateful to be recipients of various grants from the Community Foundation of Southeastern Alberta. It is community minded organizations and foundations such as yours that values the importance of this program, that help keep our doors open to be able to provide the needed assistance to victims of crime and trauma."

The Youth in Philanthropy Program looked a little different this year. Students from St. Luke's Outreach in Brooks researched the needs in the community and agencies addressing those needs. In May, they presented \$2,150 to the Brooks Food Bank Foundation.



Left to Right: Naomi Hartery, Mary Reimer, Leslie Wuehleke, Gwen Cameron, Dylan Sinclair, Judy Reimer

"Being involved in YiP helped the students see the needs in our community and feel the joy of giving back. As we researched ideas when we started to see the impact of COVID-19 in our area & the economy and wanted to put all our support into the food bank. " - teacher, Naomi Hartery

For more information about the Brooks & District Fund please contact Nicole Nichols at 403.376.8884 or brooksanddistrictfund@cfsea.ca

NEWS FROM THE RURAL COMMUNITY FUND OF FORTY MILE

Since the COVID-19 Pandemic hit in mid-March, things at the Rural Community Fund of Forty Mile have looked a lot different. Due to restrictions all businesses and residents of Alberta, and the world, were facing, many changes had to quickly be made.

CFSEA responded to the changing needs of non-profits and charities within southeastern Alberta area, and called for the redirecting of the funds from the 2020 Spring Grant Cycle the COVID-19 Response Fund. The Rural Community Fund of Forty Mile began to reach out to local municipal leaders and community partners within the County of Forty Mile to determine the greatest level of needs within the region.

“Our primary focus has now become the COVID-19 Response Fund and the Emergency Community Support Fund (ECSF) so we can ensure the most vulnerable populations in our region can be provided with the assistance they need,” emphasizes Michelle MacLean, Community Fund Coordinator for the Rural Community Fund of Forty Mile.

“It is an important focus to have as smaller communities like those in our Forty Mile region can often fall through the cracks, but with the efforts of everyone from our committee, to our office staff, to those that are getting involved or donating, we can ensure that those gaps can be closed,” added Clint Thacker, Advisory Committee Chair for the Rural Community Fund of Forty Mile.

With the most recent round of funding now complete, the CFSEA and Rural Community Fund of Forty Mile are pleased to announce that the Forty Mile Regional FCSS was the recipient of **\$5,000** in funding for their virtually facilitated physical and mental health program for youth.

“We are so incredibly grateful and appreciative of this funding,” stated Corinna Roth-Beacome, Executive Director of the Forty Mile Regional FCSS. “We weren’t sure how we would be able to facilitate our regular summer youth programs, but with the funding we are receiving and the community partnerships we have in place to make this happen, we feel confident that youth in our region will be well supported.”

While it is unfortunate that, due to COVID-19 restrictions, many meetings were canceled, and community events have not been held that we normally attend, it is incredible to see the resiliency and strength in the Forty Mile region shine through. The support of the COVID-19 Response Fund truly speaks to how our region always pulls together to reach out and support those in need, and it is very rewarding for all to see this funding developing a new, and much needed, program for this region.

As we move into Phase II of the Relaunch Strategy for Alberta, our coordinator is now available for all meetings and will be observing all safe social distancing practices in alignment with the overall CFSEA Re-Opening Guidelines.

For more information about the Rural Community Fund of Forty Mile please contact Michelle MacLean at 403.866.8901 or 40milefund@cfsea.ca

NEWS FROM PRAIRIE CROCUS COMMUNITY FUND

Community organizations in the region served by the Prairie Crocus Fund are working hard to ensure our most vulnerable populations are supported during this challenging time. Three organizations who applied, received grants from the first round of the Spring 2020 Repurposing funds. The Prairie Crocus Advisory Committee met virtually to review and make recommendations, which were subsequently approved by CFSEA Board. The Oyen & District Food Bank Association was the recipient of \$5,000, Hanna Food Bank received \$7,000, and Empress Friendship Center was granted \$1,500 for their community meals program.

"We are very pleased that we are able to grant emergency funding to support our local organizations in providing essential aid to our most vulnerable community members." - Lucille Hertz, Prairie Crocus Community Fund Advisory Committee member.

"This will help families who have lost jobs due to the COVID-19 pandemic," said Sheila Davidson, Coordinator and Treasurer.



Oyen & District Food Bank: Sheila Davison, Coordinator & Treasure and Bill Kolkman, President



Hanna Food Bank: Bonnie Nill, Director & Willard Edwards, President

"The grant money will allow us to keep our shelves full so that we won't run into shortages due to supply issues and help service any special needs that may arise," said Judy Burgemeister, Treasurer of the Hanna Food Bank Association.

"Thanks to this funding, volunteers from the newly renovated Friendship Center who have been helping out with a COVID-19 Soup and Sandwich initiative in May and June are ready to extend a welcome to the July and August BBQs," said Diane Jarvis, President of the Empress Friendship Centre.



Empress Friendship Centre (L-R): Rachel Booker, Secretary; Gerry Congram, Volunteer; Marshall Barclay, Vice-President;

For more information about the Prairie Crocus Community Fund, contact Kim Stief at 403-664-9571 or prairiecrocusfund@cfsea.ca

STAY @ HOME GALA

On May 2nd, 2020 CFSEA hosted a nation-wide Stay @ Home Gala uniting people from all over our community, region and beautiful country. The one-night event aimed to strengthen community efforts that were managing the effects of the COVID-19 virus. Social distancing at its finest, the first-of-its-kind event hosted all the familiar elements of a gala: dinner ordered in to support local restaurants, game-changing speakers, and both local & national entertainers.

The event was planned over a couple of weeks, gathering a community driven committee and dedicated staff to execute the virtual gala. The excitement, uncertainty and rapid planning was exhilarating. In the end, our community blew us away with their support of the event with incredible donations, sponsorships and by attending the gala.

We are truly grateful for the community's support in helping us raise over \$50,000!

All proceeds from the Stay at Home Gala went to the COVID-19 Response Fund for SE Alberta to support charities working with the most vulnerable populations affected by the pandemic.

Thank you to the incredible local talent:

MacKenzie Porter, Lyle Rebbeck, Jay Bowcott, Snakes and the Riot and Trevor Moore.

Thank you to the many sponsors and local businesses for their support.



A special thank you to our extraordinary volunteer committee:
Trevor Moore, Patsy Walker, Brenda Lea MacPhail, Sandra Milne,
Kristen Walsh, Tammy Sweeney and Sarah MacKenzie.

YOUTH VITAL CONVERSATIONS



COMMUNITY
FOUNDATIONS
OF CANADA

Supported by



Foundation

In partnership with the RBC Foundation, CFSEA facilitated a number of Vital Conversations for youth ages 15-29, in February 2020. These consultations took place across Southeastern Alberta, including their three rural fund areas, and addressed the community's most pressing needs and creative solutions. CFSEA heard their opinions and are moving forward to help co-create next steps for potential solutions.

725
SURVEYED
YOUTH
SAID.....



WHAT ARE THE TOP ISSUES IN YOUR COMMUNITY - AND WHAT SOLUTIONS WOULD ADDRESS THEM?

DRUG USE

Drug Awareness and Increased Police and Law Enforcement

More Youth Events, Youth Centres and Recreational Activities

NOTHING TO DO

LACK OF JOB OPPORTUNITIES

New Employment Opportunities
Improve Public Transportation

Thank you to the wonderful teachers who welcomed us into their classrooms to survey their students!
We are so grateful for the opportunity to partner with RBC Foundation and Community Foundations of Canada to support the youth across Southeast Alberta!

VOLUNTEER PROGRAM FOR VULNERABLE POPULATIONS

Volunteer Program

for vulnerable populations

Develop connections.
Coordinate services.
Fight isolation.



KEEP IN TOUCH CALLERS VOLUNTEERS NEEDED!



Interested in volunteering?

Call: 403-527-9038
Email: sydney@cfsea.ca

Looking forward to your
help!

WWW.CFSEA.CA

A KIT CALLER WILL:

- Develop connections with people who feel isolated
- Make regular phone calls to provide support
- Possess a general knowledge or be willing to research supports in Medicine Hat and area
- Complete thorough screening and training

KEEP IN TOUCH PROGRAM

The Keep In Touch program is for residents in Medicine Hat who are looking to make connections and fight isolation. The COVID-19 pandemic is affecting everyone and we are here to help community members find resources to support their needs during these unprecedented times!

Thanks to a grant from Family Community Support Services, we are able to provide a volunteer program to centralize and deploy volunteers. The focus of the program is to support vulnerable residents in Medicine Hat in the wake of the pandemic.

To learn more about the program, please contact Sydney at the CFSEA office or by email.

CFSEA ENDOWMENT FUNDS

The Community Foundation has a number of options for donors interested in establishing a fund.

Smart & Caring Funds

Smart & Caring Funds respond to the ever-changing needs of our region now and for generations to come. Investment income is distributed through a granting process.

Designated Funds

Choose your favourite charitable organization(s) and each year the investment income will be dispersed to that organization(s).

Field of Interest Funds

Support your charitable areas of interest, while still responding to our region's greatest needs.

Donor Advised Funds

Donors advise CFSEA each year as to which charitable organization(s) are to benefit from the investment income from their fund.

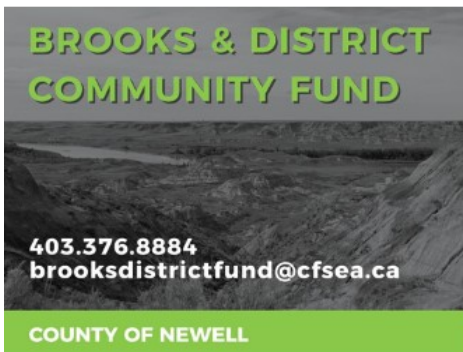
Scholarship Funds

Donors can establish specific Scholarship Funds to support southeastern Alberta students in their educational pursuits. Donors determine the scholarship criteria, including student characteristics and specific school district(s).

Agency Funds

Investment income from their permanently endowed funds are issued back to the agency.

Funds established through one of our three rural community funds will stay within that community to support local agencies, forever!



**BROOKS & DISTRICT
COMMUNITY FUND**

403.376.8884
brooksdistrictfund@cfsea.ca

COUNTY OF NEWELL



**RURAL COMMUNITY
FUND OF FORTY MILE**

403.866.8901
40milefund@cfsea.ca

COUNTY OF FORTY MILE



**PRAIRIE CROCUS
COMMUNITY FUND**

403.664.9571
prairiecrocusfund@cfsea.ca

SPECIAL AREAS 2, 3 AND MD OF ACADIA

VOLUNTEER HIGHLIGHT

MEET OUR CHAIR OF THE RURAL COMMUNITY FUND OF FORTY MILE, CLINT THACKER

While Clint and his wife Robin along with their three children Ria, Gabriel and Elise have called Bow Island their home for the past thirteen years, it's not where their story began.

Clint was born and raised in Bow Island, Alberta. He completed a two-year program in Commerce at the Medicine Hat College, and then transferred to the University of Calgary to complete his Accounting Degree. He then worked for the Auditor General of Alberta for a short period of time, returning to the UofC and completing a Political Science Degree. This led to a position with the RCMP in Leduc, Alberta. While living here, he and wife Robin were married and started their family.

In 2007 they moved to Bow Island as an opportunity came about to return to the family farming business. Clint and Robin, along with Clint's parents, are all the proud owners of LTAC where Clint is now Vice President. His focus is on agronomy, sales in specialty crops, as well as the business operations.

Clint is always busy with family and work, but never too busy for his community. In the past, Clint has served in a variety of volunteer roles, including Vice President of Bow Island Minor Sports, President of the Bow Island Curling Club, and was even part of the Bow Island Emergency Management Services. In addition to currently serving as the Chair of the Rural Community Fund of Forty Mile, Clint has also recently become a Director with the Forty Mile Food Bank and serves on the Troy Loney Charity Golf Classic Committee. For Clint, it is all about wanting to contribute back to the area and to all those great things he experienced in his own upbringing.

"It's important to be a positive asset to the community that I gain so much from," comments Clint. "Whether that's personally or as a business, for our kids, our family, or our community, this area gives us so much that we always want to make sure we're giving back, and that's one of the main reasons I took on the role as Chair of our local Advisory Committee."

"I really enjoy being part of something that not only has constant growth and improvement, however, seeing the impact in our region is also very rewarding," adds Clint. "I also see the fund as providing a base for the future and being a support for all the needs in our region."

We couldn't agree more, Clint, and we look forward to having you on the committee for many years to come!



1PHOTO CREDIT Heather Hart Back: Ria (13), Gabriel (13), Elise (12) Front: Clint & Robin Thacker

STAFF UPDATES

Welcome to our new Executive Director, Sue Edwards!

"On behalf of the Board, committee members and staff we would like to welcome Sue Edwards as our new Executive Director. We look forward to Sue's positive energy and dedication in carrying on our commitment to our donors and the communities that we serve." - Board Chair, Michael Anctil

"I am thrilled to be hired as the new Executive Director for Community Foundation of Southeastern Alberta. My vision is to continue having the positive impact on our communities while inspiring others to discover their philanthropic journey. I look forward to working with CFSEA board, staff, donors and volunteers as we all strive for a vibrant, healthy, caring community." - Executive Director, Sue Edwards



Sydney Ratzlaff Volunteer Coordinator for Vulnerable Populations



Through a Family Community Support Services grant, we are able to welcome Sydney to our CFSEA team. Her role is to centralize and deploy volunteers to support vulnerable residents in Medicine Hat in the wake of the pandemic!

Hannah Duhaime Philanthropic Database Coordinator



Hannah is with us for the summer and will assist us with the data migration and set up of our new database!

IN THE COMMUNITY

Community events are looking different this year due to the pandemic.

If you plan to attend the following events, please ensure you are practicing physical distancing according to the Government of Alberta regulations.



**RURAL COMMUNITY
FUND OF FORTY MILE**

**MARKET IN THE PARK - BOW ISLAND
Centennial Park**

July 29
August 12 5:00 PM - 8:00 PM
August 26

**403.866.8901
40milefund@cfsea.ca**

COUNTY OF FORTY MILE



**PRAIRIE CROCUS
COMMUNITY FUND**

OYEN FARMERS' MARKET
July 17 & 31 11:00 AM - 2:00 PM
August 21 & 28

HANNA FARMERS' MARKET
July 29, August 26 & September 23 3:00 PM - 7:00 PM

**403.664.9571
prairiecrocusfund@cfsea.ca**

SPECIAL AREAS 2, 3 AND MD OF ACADIA