

Spring 2022

VitalNews

30th ANNIVERSARY

FUND HIGHLIGHT
Cancarb Fund

DONOR STORY
Barry & Janet Neubauer

VOLUNTEER HIGHLIGHT
Vital Conversations

UPCOMING EVENTS

RURAL COMMUNITY FUNDS
Staff Introductions



Celebrating 30 Years of Giving!

2022 marks our 30th Anniversary and we are thrilled to announce that we will be hosting a celebration on June 8th in Medicine Hat! Save the date and join us for stories, cake, live music, and grant recipient highlights. This event will take place from 4:00pm—6:30pm.

Throughout the year we will be sharing impact, donor, and volunteer stories and we encourage you to follow along through the Vital News, social media, and by visiting our website. Highlighting those who were dedicated in establishing and supporting CFSEA the last 30 years will help us tell the story of the Community Foundation of Southeastern Alberta. If you would like to share your story, please reach out to us—we would love to highlight you! By the end of the year, you will be able to read “30 stories for 30 years!”

A lot has changed in 30 years, but one thing has remained, the support of a community that sees the value in planned giving through our endowments – ***a gift that lasts forever!***



To give a *gift that lasts forever* – consider signing up as a monthly donor and help us reach our **goal of 30 monthly donors** by the end of 2022! For the month of March, if you sign up as a new monthly donor, CanadaHelps.org will donate an additional \$20!

FUND HIGHLIGHT : CANCARB EMPLOYEES & ALUMNI ENDOWMENT FUND

Cancarb was established in Medicine Hat in 1973 and is the world's largest thermal carbon black production facility. In 2021, they opened the **Cancarb Employee & Alumni Endowment Fund** with the Community Foundation of Southeastern Alberta. This fund will become a Donor Advised Fund once they reach \$15,000. Cancarb will form an ad hoc committee amongst those who donate in order to choose which local organization, each year, will receive a grant from the Cancarb Fund. Anyone wishing to contribute to this fund can donate by cheque or [online](#).

cancarb



TOKAI CARBON GROUP

As a company, Cancarb has always actively supported many local charitable organizations and their activities, either with donations or direct participation. This new fund gives our retired employees an opportunity to contribute to the community while maintaining their connection to Cancarb, where many of them worked their whole careers. It gives both current and past employees an opportunity to consider their longer-term donations, estate-planning, and legacy considerations.

-Peter Donnelly, Cancarb President & Endowment Committee Member

A **corporate endowment fund** is a great way for your company to establish itself as a community leader and enables your employees to play an active role in social responsibility.

Several companies have established endowment funds at CFSEA that continue to make a lasting impact in the community. By choosing to create a Donor Advised Fund, your staff can participate each year in the granting and giving process by choosing which agency(s) will receive a grant.



Connect with CFSEA if you are interested in learning more about how your company can contribute to a vibrant, healthy, and caring community.

403.527.9038 | admin@cfsea.ca

DONOR STORY: BARRY AND JANET NEUBAUER

Barry and Janet Neubauer were first introduced to the Community Foundation through family friend and CFSEA founder, John Ignatius, who Barry admired. They connected with CFSEA because they were interested in the opportunity to give back to the community they grew up in. In 2005, they made their first donation and established a Smart and Caring Community Fund. Barry and Janet made the decision early on to become Heritage Club Members. This means they have included CFSEA in their future plans through a bequest, life insurance, trust arrangement, or other asset of choice. Barry also currently volunteers on the CFSEA Endowment Development Committee and the newly formed Cypress County Advisory Committee. Barry was instrumental in supporting the development of the Cypress County Community Fund which allows residents to give where they live. In fact, the Janet and Barry were the first donors to contribute to the newly established fund.

“Congratulations to CFSEA on the establishment of the Cypress County Community Fund. As long time residents of Cypress County, we were pleased to donate to the fund as it will enhance the resources available to local non-profits.”

- Janet and Barry Neubauer

Long-time residents of Cypress County, Barry has spent the majority of his life in the area with the exception of a brief stint in Calgary while attending the University of Calgary. Janet was born in Medicine Hat and moved to Cypress County in 1982. Both Barry and Janet attended Medicine Hat College and the University of Calgary.

Barry spent the majority of his working life involved on the family farm and ranch, though he is no longer active in ranching. Janet was employed by the provincial government for many years and retired in 2007.

They both enjoy travelling, spending time in Cypress Hills, and gardening. As true philanthropists, Barry and Janet are giving of their time, talent, and treasure. They find pleasure in many volunteer activities. CFSEA is grateful for Barry and Janet, donors, volunteers, and friends of the Foundation.

“We have a deep connection to Cypress County and Southeastern Alberta. It is home.”

- Janet and Barry Neubauer



Barry and Janet Neubauer

VOLUNTEER HIGHLIGHT

Vital Conversations Sub-Committee

A nine member committee recently formed to offer diverse experience, knowledge, and expertise in the planning and facilitation of Vital Conversations.

Thank you to each member who is helping support this initiative!



Shona Dickie
City of Medicine Hat



Treena Klassen
Palliser Primary Care Network



Joshua Schafer
Chamber of Commerce



Myrna Stark
Sandfly Marketing
CFSEA Board Member



Jason Openo
Medicine Hat College
CFSEA Board Member



Lisa Kowalchuk
Chamber of Commerce



Yusuf Mohammed
The Connection Intercultural Association



Ken Feser
Medicine Hat Public Library



Pamela Kunz
Chamber of Commerce

“Act as if what you do makes a difference...it does.” – William James

UPCOMING EVENTS: SAVE THE DATES

Upcoming Events

XXXXXXXXXXXXXXXX



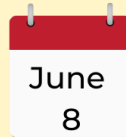
**Community Grant
Deadline (4:30pm)**



**Vital People Award
Deadline (4:30pm)**



**Community Impact Award
Deadline (Workshop April 5th)**



**Founder's Day Picnic - 30th
Anniversary (4:00 - 6:30pm)**



**Medicine Hat Vital
Conversations**

Vital Conversations are facilitated discussions with community members to learn more about the social and economic trends impacting local quality of life. The conversations are often used as a starting point to identify local priorities and mobilize community into action. Medicine Hat and each rural community in SE Alberta will participate in a Vital Conversation Event.

Vital People Award offers two \$500 awards, to assist with the training or skill development of a permanent staff or volunteer with a registered charities. Please visit cfsea.ca for the nomination form. Email admin@cfsea.ca for questions.

A Lasting Legacy

We all want to leave our mark on this world – to know our life mattered. Perhaps you want to be remembered for your hobbies, your values, or your accomplishments; John P. Ignatius will be forever remembered by the Community Foundation of Southeastern Alberta (CFSEA) for just that. Without John, CFSEA would not exist today.

John P. Ignatius started the Community Foundation because he wanted to leave a legacy.

- Gerald Maser, Friend

John Paul Ignatius was born in Ashland, Oregon July 17, 1918. His family moved to Alberta in 1919 where they farmed and ranched north of Etzikom, then purchased a property southeast of Seven Persons. John enjoyed a rural lifestyle for more than 80 years. Later, he owned several ranches – one north of Jenner on the Red Deer River, one west of Brooks, another in the Cypress Hills, and finally a ranch south of Irvine, which he continued to operate until his passing.

Early in John's life he became the founder of new ventures including the Jenner 4-H Multi-Club and remained associated with the Club for over 32 years. He was passionate about leaving a legacy for generations to come in the agriculture sector.

Not only was John a philanthropist when it came to his time, he also found important ways to steward his money for the betterment of the community. His first major act of charitable generosity occurred when he was informed that the new hospital in Medicine Hat was lacking funds for furnishings. At the cost of \$22,500, he furnished ten wards at the Medicine Hat Regional Hospital. Later, John donated \$25,000 to the Lethbridge Community Foundation to provide scholarships for 4-H members to pursue agricultural careers. This donation made him wonder why Medicine Hat did not have a Community Foundation for the people of Southeastern Alberta.

With the assistance of dedicated volunteers, the Community Foundation of Southeastern Alberta was established on June 26, 1992, with an Act of Legislature of Alberta. John continued to showcase his kindness and generosity by personally donating over \$130,000 to help CFSEA get started. In 1998, John established a TX Ranches Baseball Fund, because of his love for baseball and his desire to help the Medicine Hat Youth Baseball Society become sustainable, forever.

True to his desire to leave a legacy, upon John's passing on January 8, 2000, he gifted the Foundation more than \$2.4 million dollars. His financial impact has helped, and continue to help, many individuals across Southeastern Alberta.

John Ignatius was a respected cowboy, a man of his word who enjoyed being with friends, playing and watching baseball, visiting with ranchers at cattle auctions, dancing, playing crib, and telling stories over a cup of coffee. He was known as a true gentleman who wanted to make a lasting difference. At CFSEA, John will be remembered as a man who worked hard and left his entire life's savings to help address the changing needs of the people in Southeastern Alberta.



BOARD OF DIRECTORS

Message from the Board Chair

Full disclosure, this is my second try at this article. The first one was a bit dark and now that the sun is out I'm going to take another run at this. I just recently finished a book by Adam Grant called Think Again. In it he states that the moment that we feel certain about something is the moment that we need to think again. We need to be curious. "The accelerating pace of change means that we need to question our beliefs more readily than ever before." Wise words for all of us.

After watching a Ted Talk by Dan Pallotta we are thinking again. We are starting discussions on how to think big for endowment building. If you have ideas and want to be a part of our discussions please contact either myself or the office; we'd love to hear your ideas. It's time to think again.

Even though it is amazingly cold as I write this, I do feel that spring is just around the corner. I'm looking longingly at my golf clubs and dreaming of soon being on the outdoor pickleball courts. Spring is a time for new growth, new thinking, and being actively open-minded. What can you think about again?

Sincerely,

Frances Barnes

Seeking Volunteer Board Members

The Community Foundation of Southeastern Alberta (CFSEA) is seeking volunteer Board Members that can commit to approximately five (5) hours a month and serve a minimum three (3) year term. Applicants are requested to email a letter of interest outlining their passion for community involvement and business knowledge that will contribute to the mission and operations of CFSEA to Frances Barnes at board@cfsea.ca by Friday, April 15.

CFSEA is an Equal Opportunity organization and encourages applicants from minorities, women, protected veterans, and individuals with disabilities and all other qualified applicants. We welcome you to inform us, in confidence, if you require any special accommodations to participate in our recruitment process.

CFSEA is committed to improving the quality of life for the people of Southeastern Alberta through developing permanent endowments, making responsible grants, and inspiring community leadership.

www.cfsea.ca | 403.527.9038 | board@cfsea.ca

RURAL COMMUNITY FUNDS



BROOKS & DISTRICT COMMUNITY FUND

Nicole Nichols was born and raised in Brooks. In 2007, she moved away to attend SAIT and start a career in Business Administration. After 8 years, she decided to move back to her home town. She is grateful for the opportunity to represent the Brooks & District Community Fund, as this is the community she was raised in. In her spare time, she enjoys tending to her garden, going fishing, and knitting toques!

P: 403.376.8884 | E: brooksdistrictfund@cfsea.ca

RURAL COMMUNITY FUND OF FORTY MILE

Sara Weatherhead is new to the position for the Rural Community Fund of Forty Mile. She lives in Burdett with her husband and two girls. Sara has a Social Work Diploma and has previous work experience with the Town of Bow Island and Community Resource Center. She volunteers on various local Boards and loves the small town support and connection! In her spare time, she likes refurbishing furniture, working on outdoor projects, and playing volleyball.

P: 403.866.8901 | E: 40milefund@cfsea.ca



CYPRESS COUNTY COMMUNITY FUND

Hannah Minor was born and raised in Medicine Hat and started working for the Community Foundation in May 2021 as a summer student. She is now the Program Coordinator with CFSEA. She graduated from Mount Royal University in 2021 with a Bachelor of Arts. Hannah volunteers with Special Olympics Medicine Hat and is on the Board of Directors for KidSport Medicine Hat and Redcliff. She coordinates the Cypress County Community Fund and supports Vital Signs initiatives across the region.

P: 403.527.9038 | E: cypresscountyfund@cfsea.ca

PRAIRIE CROCUS COMMUNITY FUND

Hannah Minor will be coordinating the Prairie Crocus Community Fund until Kim Stief returns from maternity leave.

P: 403.664.9571 | E: prairiecrocusfund@cfsea.ca

PHILANTHROPY: COMMUNITY FUNDS

Community Foundation and Community Fund

Community foundation or geographic-based community fund? What is the best solution for our community?



What is the Difference Between a Foundation and Fund?

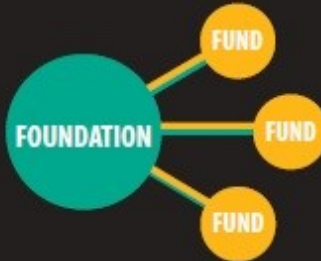
Community Foundation

A non-profit corporation registered as a public foundation with the Canada Revenue Agency.

Governed by a Board of Directors.

Responsible for financial records and reporting, tax filing and audit, administrative infrastructure and resources, investment management, granting administration, organizing joint meetings, entering into fund agreements with donors.

Has liability for all activities and volunteers.



Community Fund (geographic-based)

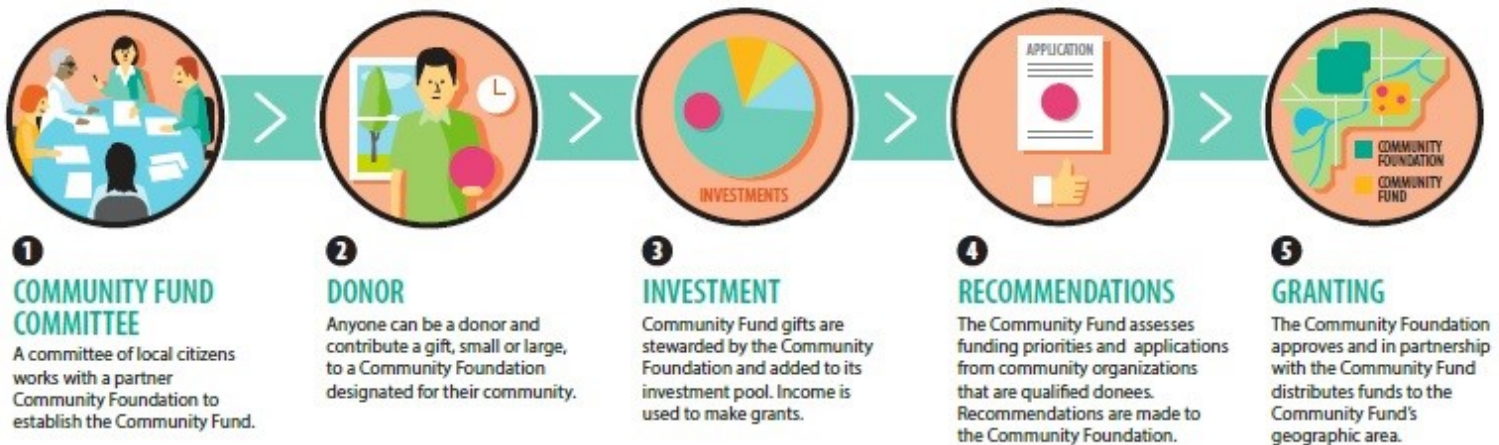
A component of a Community Foundation that may or may not be a separate legal entity.

Run by a local Advisory Committee in liaison with the Community Foundation board and support from Community Foundation staff. Adheres to the Community Foundation's policies and practices.

May or may not implement own application process; provides grant recommendations to the Community Foundation.

There can be multiple geographically-based Community Funds partnered with one Community Foundation.

How Does a Foundation and Fund Work Together?



What is a Community Fund and How Does it Work?

- Community members donate to the Community Fund in their region to create and grow a permanent endowment.
- All donations are invested with a professional advisor.
- Each year, in perpetuity, earning from the investments are used to support projects within the specific community.
- A local Advisory Committee in each area lead the direction of the fund and make recommendations for grant allocations.
- Funds are granted to local charities so they can help support a vibrant, healthy, and caring community—forever!

To find out more about our four Community Funds or to subscribe to a rural newsletter, please visit our [website](#).